



Thermal Simulation Report

Simulation Date: 1/6/2014

Client: Panda Windows and Doors

Contact: Alex Terran

Product Type: Inswing/Outswing Door

Model ID: TS68 – 40 mm Window Testing

The Following NFRC Procedures were Followed:

NFRC-100-2010
NFRC-200-2010
NFRC-300-2010
NFRC-500-2010

Simulated by:

Derek Meline
NFRC Certified Simulator
Technoform Bautec North
America
330-487-6628
dmeline@technoform.us

Bart Hensley
NFRC Certified Simulator
Technoform Bautec North
America
330-487-6619
bhensley@technoform.us

Stephen Aki
NFRC Certified Simulator
Technoform Bautec North
America
971-832-0502
saki@technoform.us



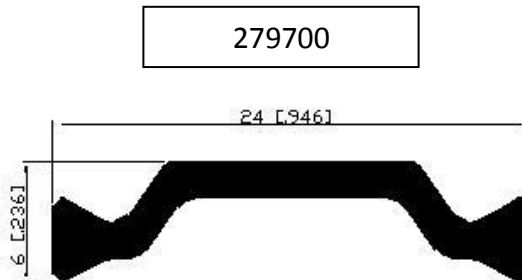
Note: This report is based on approved practices, methods and values which are established by National Fenestration Rating Council (NFRC). The results shown are for informational purposes only and not to be used for product certification or labeling. Actual product testing results may vary from the values shown in the simulation.



Summary Report

Panda Windows and Doors

Simulator:	Stephen Aki										
Date:	1/6/2014										
System:	#1	Outswing/Inswing Door Simulation .96 m x 2.090 m									
	#2	Outswing/Inswing Door Simulation w/ two Gaskets in Sill .96 m x 2.090 m									
IG #	Glazing Matrix										
IG-1	VUE-40 #2 6mm / 90% Argon .5" / Clear 5mm w/ VE-85 #4 / 90% Argon .5" / Clear 5mm									6362 / 9 / 30030 / 9 / 5011	
#1	System Description									Outswing/Inswing Door Simulation .96 m x 2.090 m	Spacer Height
IG #	Spacer Type	Spacer Size	Primary Seal	Secondary Seal	U-Factor BTU/hr.ft2.°F	U-Factor W/m2-K	SHGC	CR Value	Sightline Temp. °F	Top of Spacer to Edge of Glass (inch)	
IG-1	TGI Rigid 1/2"	0.5000	PIB	Silicone	0.317	1.797	0.122	48.3	52.0	0.4252	
#2	System Description									0	Spacer Height
IG #	Spacer Type	Spacer Size	Primary Seal	Secondary Seal	U-Factor BTU/hr.ft2.°F	U-Factor W/m2-K	SHGC	CR Value	Sightline Temp. °F	Top of Spacer to Edge of Glass (inch)	
IG-1	TGI Rigid 1/2"	0.5000	PIB	Silicone	0.297	1.684	0.121	49.5	46.7	0.4252	



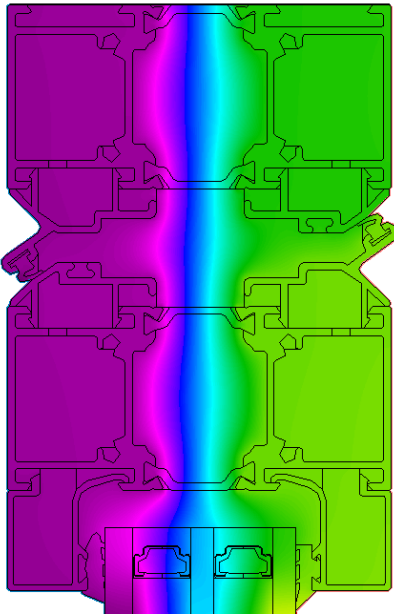
Notes:

- Thermal break used was article 279700, a 24.0 mm offset strip with no glue wire, produced locally by Technoform in Ohio
- VE-85 was not available at the size Panda requested, custom glass was created using Optics
 - Clear 5mm w/ VE-85 on surface 4
- Glass used was manufactured by Viracon & PPG. Need to check with supplier to make sure this IG is possible
- Gasket added per request and simulation re run to display new results
 - Results were a .02 drop in u-factor, from .317 to .297

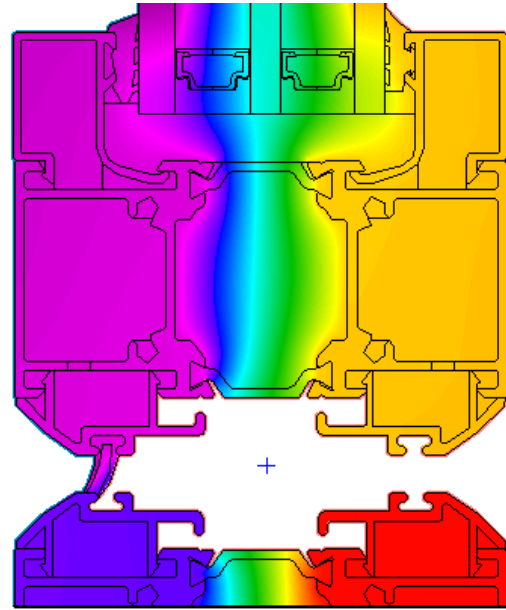


- Screenshots:

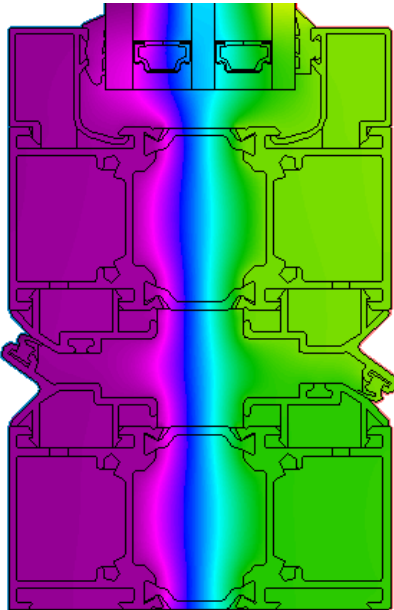
Head:



Sill:



Jamb:



IG#2 Sill w/ Gasket:

