

FOLDING DOORS

The Architects' Choice

 TECHNICAL INFORMATION



 **PANDA**
WINDOWS & DOORS



FOLDING DOORS



For a seamless transition from indoor to outdoor spaces, Panda Folding Doors are the perfect design choice. Also referred to as bi-fold or accordion doors, these innovative Folding Doors feature a proprietary top-hung design that allows individual panels to stack or “fold” against one another on either side or both sides of the door frame. When fully open, the stacked door panels provide a 90% unobstructed view of the outdoor space beyond.

Applications and Uses

Innovative engineering, unlimited design options, safety and security features, and easy-to-use functionality make Panda's Folding Door systems a popular choice for both commercial and residential projects.

Features and Benefits

- State-of-the-art engineering featuring 6063-T6 aluminum extrusions, European hardware, and Delrin polymer rollers makes Panda Folding Doors remarkably lightweight, durable, and weather-resistant - even with repetitive, daily use.
- Daily doors (swing, egress, or flag doors) can be integrated into the system, allowing for easy entry and exit without having to open the entire system.



→ Limitless customization options include radius or “curved” options, multidirectional and unidirectional layouts, zero-post corner designs, and both inswing and outswing options.

→ As with our extensive portfolio of aluminum glass doors, Panda’s Folding Door Systems are available in a wide variety of finishes to complement any décor. We also offer coastal applications where corrosion from salt and seawater is a potential concern.

→ Child-safe features such as multiple pinch-proof EPDM bubble gaskets layered between each panel.

→ For especially large openings requiring taller or heavier panels, Panda offers ‘Ultra’ designs fabricated with a heavy-duty, European groove-hinge anchoring system with 10mm stainless steel pins.

→ Panda also offers countless standard and ADA-compliant track options and hardware selections based on project specific requirements and preferences.

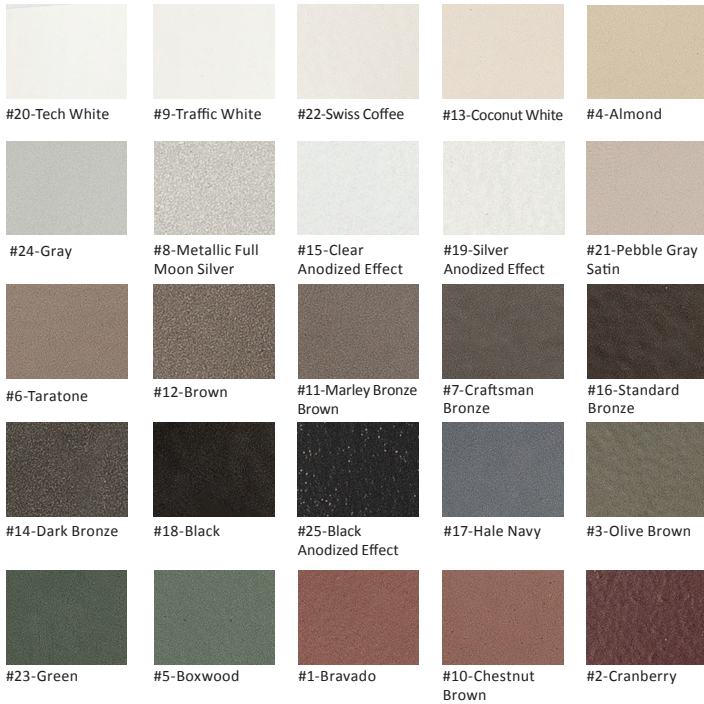
→ Multi-point locking mechanisms and concealed throw-pins in the top and bottom tracks make Panda Folding Doors reliably durable and maximally secure against forced entry.

Customizations

Panda fabricates every system according to exact design and specifications. Choose from a variety of options for wood, track, handles, glass, finish, and even curved systems.



FINISH OPTIONS



**Actual colors may appear different from finish options shown. Color samples available upon request.*

Powder Coat Finishes

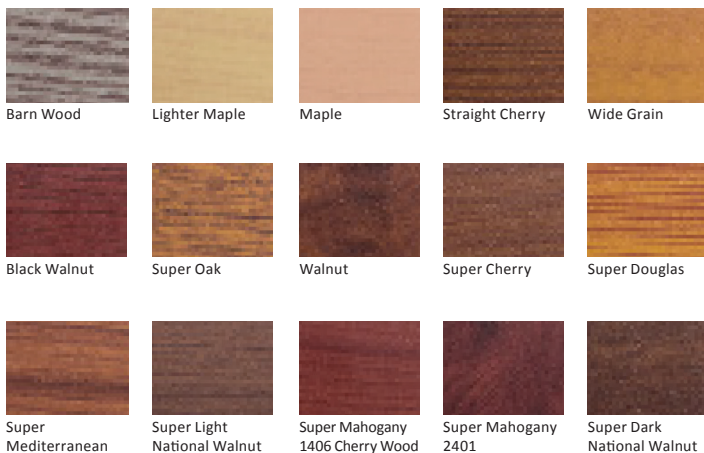
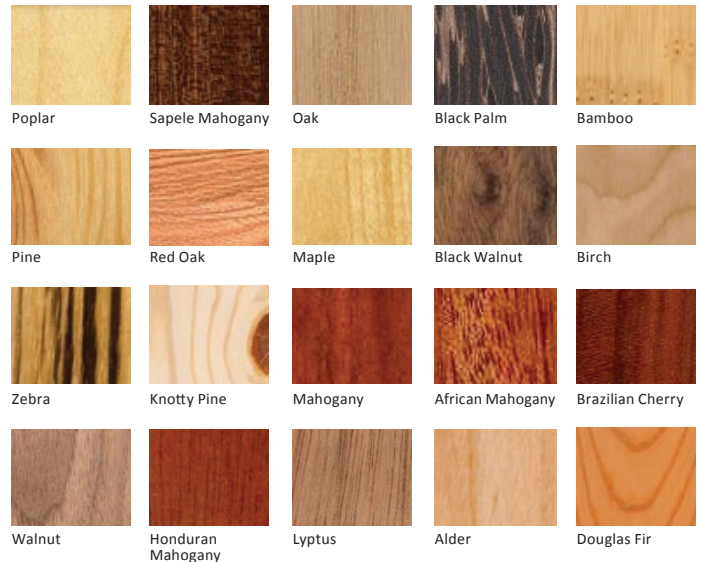
Choose from numerous finish options to make your window or door system your very own. If you would like to create or match custom colors beyond the standard options, our team is ready to assist you.

Twenty-five powder coat finish options are available as standard AAMA 2604. Also available are AAMA 2605 powder coat, metallic/bonded powder coat, anodized, Kynar, and Duranar finishes. A two-tone color scheme is available for all thermally-broken systems. Rest assured, our team is here to help you choose the right finish for the environment in which your system will be installed.

Wood

Panda offers many different species for our wood-clad and solid wood systems. Available options are: Stain Grade Pine, Paint Grade Poplar, African Mahogany, Clear Pine, Douglas Fir, Vertical Grain Douglas Fir, Maple, Birch, Cherry, Oak, Alder, Knotty Alder, Teak, and Walnut.

For options not listed or custom wood detailing requests, our team is ready to help meet your design goals.



Faux Wood

When your space needs more than a standard stock color, elevate your design with our wood grain textures.

In response to the growing demand for LEED and GREEN builds, Panda is proud to be one of the first companies in the United States to incorporate this cutting-edge design into our aluminum products.

Providing the look of wood and durability of aluminum, faux wood provides a no-compromise solution that will surely exceed all expectations.

TRACK OPTIONS

3/4" Recessed Track

This smallest recessed track available for folding doors. recommended for interior applications or applications where the door system features full coverage.



1-1/2" Recessed Drainage Track

This track is ideal when the 2" Thermally Broken Recessed Drainage Track is too large.



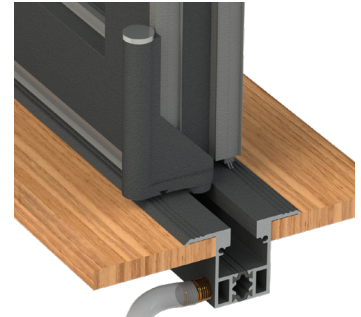
1-1/2" ADA Recessed Drainage Track

An ADA compliant recessed drainage track ideal for commercial applications.



2" Thermally Broken Recessed Drainage Track

Thanks to thermally isolating properties that create a barrier between inside and outside temperatures, this track offers excellent energy efficiency performance.



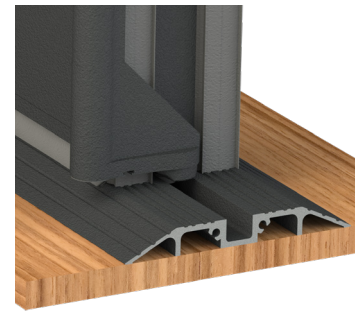
2-1/4" Recessed Drainage Bottom Running Track

This track carries most of the weight of the system on the track itself to lessen the load on the header (enabling larger panel sizes). A no-drain option also available.



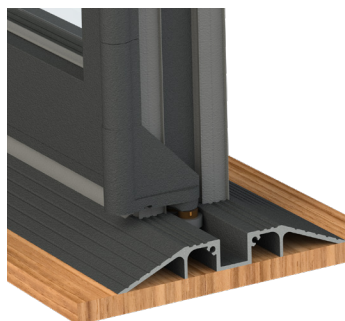
1/2" ADA Surface Track

An ADA compliant surface mounted track ideal for interior or full coverage applications. Ramps come as standard on the interior and exterior.



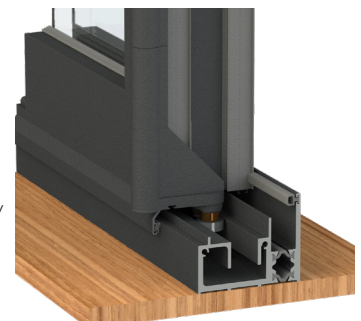
3/4" Surface Track

Best for interior or full coverage applications, the ramps come as standard on the interior and exterior. A weep drainage option is available.



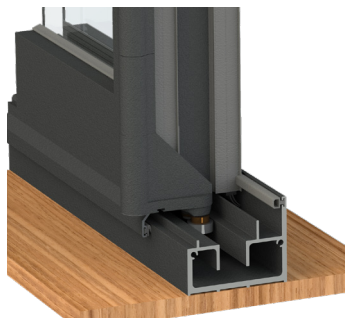
2-3/16" Thermally Broken Standard Surface Track (High Performance Track)

Thanks to thermally isolating properties to divide inside and outside temperatures, this track offers improved energy efficiency performance. It is installed directly on top of the flooring and can be powder coated to match the system finish.



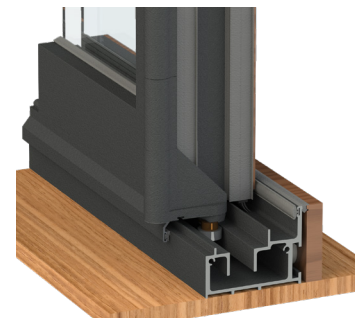
2-3/16" Standard Surface Track (High Performance Track)

Similar in design and installation to the 2-3/16" Thermally Broken Standard Surface Track, this is an option for non-thermally broken units. Can be powder coated to match the system finish.



2-3/16" Standard Surface Track (High Performance Track)

Similar in design to the 2-3/16" Thermally Broken Standard Surface Track, but created with the ability to have a wood-clad interior surface. Perfect for installation that requires the track to be exposed.



HANDLE OPTIONS

Choose from several handle designs and finishes for your Folding Door system. Interested in specifying a handle not pictured below? Our engineering and design team is here to assist you with customizable options.

Panda 150



Our standard throw handle. The finish is powder coated to match the system.

Panda 200



This pull handle (also known as a D-Ring) is used on every Folding Door system to pull door panels together to operate the throw handle when closing the system. Finish is powder coated to match the system.

Panda 300



An alternative throw handle designed specifically for Ultra Folding Doors. Finish is powder coated to match the system.

Panda-V



An alternative throw handle design for wood systems. Finish is powder coated to coordinate with the system.

Panda-V (Lock)



An alternate throw handle designed for wood systems. Finish is powder coated to match the system.

Aria



Swing door handle used on systems that incorporate daily-use doors. Choose from White, Bronze, Black, Brushed Chrome, and Satin Chrome.

Acacia



Swing door handle used on systems that incorporate daily-use doors. Choose from White, Bronze, Black, Brushed Chrome, and Satin Chrome.

Summit



An alternate swing door handle used on systems that incorporate daily-use doors. Choose from Bronze, Silver, Brushed Chrome, and Satin Chrome.

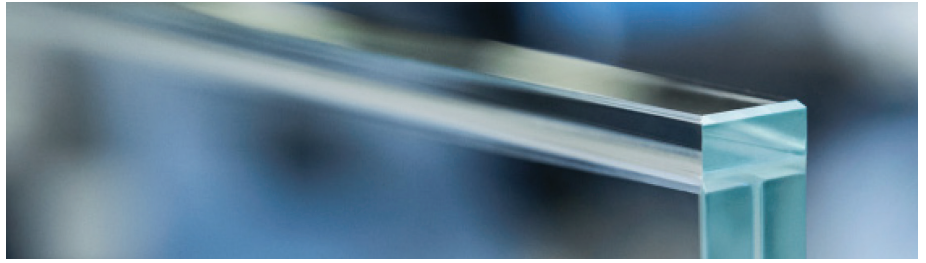
Verona



ADA-compliant swing door handle used on systems that incorporate daily-use doors. Choose from White, Bronze, Black, Brushed Chrome, and Satin Chrome.

GLASS OPTIONS

Low-E glass comes standard for all units. If you require a specific Low-E or non Low-E option, we will be happy to advise you on the best type of glass for your project.



SEGMENTED RADIUS

Panda is pleased to offer a segmented, curved Folding Door system, also known as a segmented radius system. Intended for projects designed with a radius system where the client prefers a folding door over a sliding system. Panda is ready to work with you to design, customize, and build the right system for your project.



STILES/PANEL INFO

Model	Material & Construction	Panel Thickness	Stile & Rail Profile
S.51 Aluminum	Aluminum extrusions with wall thickness of up to 1/8".	2 3/8"	2 1/16"
US.51 Aluminum Ultra	Additional stile support to withstand heavier loads.	2 3/8"	2 1/16"
TS.60 Thermally Broken	Thermal breaks create non-conductive bridge using polyamide iso-bars.	2 3/8"	2 1/16"
UTS.60 Thermally Broken Ultra	Additional thermally-broken stile support to withstand heavier loads.	2 3/8"	2 1/16"
S.66 Solid Wood	Solid Exterior/LVL Wood Core.	2 1/2"	4"
S.74 Aluminum Wood Clad	Wood panels are taped onto the aluminum extrusion with VHB Tape.	2 5/8"	2 13/16"
TS.75 Aluminum/ Wood Clad Thermally Broken	Thermal breaks with wood cladding provide superior insulation and weather performance.	2 5/8"	2 13/16"

Click or scan QR code to view Technical Specs.

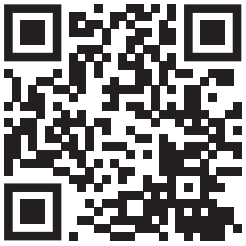
S.51 Aluminum



US.51 Aluminum ULTRA



TS.60 Thermally Broken



UTS.60 Thermally Broken ULTRA



S.66 Solid Wood



S.74 Aluminum/Wood Clad



TS.75 Aluminum/Wood Clad Thermally Broken



Folding Door Animation

