



# VOYAGE SELECT

Contemporary Pivot Doors





# Elegance, Re-Imagined.

---



Winner of Window+Door Magazine's 2022  
Award for **Most Innovative Entry Door**



## FOR THOSE LOOKING TO MAKE A GOOD IMPRESSION, START WITH AN AWE-INSPIRING ENTRYWAY.

Traditional hinged doors are hung on a frame which limits their size and weight, but pivot doors operate by turning around a spindle (acting as the “pivot” point). This gives the door a sleek, contemporary look while taking the weight off of the door frame. The spindle also allows for larger, heavier panels measuring up to 9’ wide and 18’ tall! Pivots can be a truly breath-taking addition to any project.

Our pivot doors are not only beautiful, but easy to use as well. Thanks to our state-of-the-art engineering, each door can be operated almost effortlessly, even when panels exceed 300lbs. Each unit is fabricated with a concealed self-closing mechanism for ease of use, and a multi-point locking system to secure your door against forced entry.

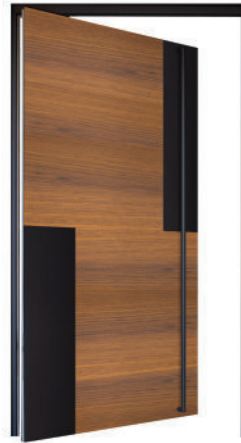
Each system is handcrafted at our warehouse in Las Vegas, NV with quality hardware, steel pin spindles, and our unique 6063-T6 aluminum extrusions. Our 10 year warranty and dedicated customer service means you can put your mind at ease knowing that Panda will be there for you even after your door has been installed.



**WE'VE GOT A  
BEAUTIFUL ARRAY OF  
STANDARD DESIGNS  
AND COLORS, BUT  
ANY DOOR CAN BE  
CUSTOMIZED.**

The interior of the door  
can be matched to the  
exterior or your choice  
of solid color.

These Images are for reference  
only - colors can change. Color  
matching is possible but not  
guaranteed.



**PARIS**

*Timber Teak with Matte Black Details*



**SYDNEY**

*Matte Grey with Zebrawood Details*



**RIO**

*Available in Matte Black,  
Matte Grey, and Stone Silver*



**SEQUOIA**

*Matte Black with Timber Teak  
and Aluminum Details*



**AUCKLAND**

*Royal Blue with Glass Lite,  
Matte Green, and Matte Grey Details*

# Luxury Doors, Customized.





### BOND

*Matte Black with Timber Teak  
and Aluminum Details*



### LONDON

*Royal Blue with Aluminum Details*



### PETRA

*Slate Grey with Matte Red  
and Aluminum Details*



### IBIZA

*Slate Grey and Timber Teak Details and  
Glass Lites*



### MELBOURNE

*Matte Black with Timber Teak  
and Aluminum Details*



### FIJI

*Matte Grey with Zebrawood Details*



### TOKYO

*Available in Matte Black,  
Matte Grey, and Stone Silver*



### SAN CARLOS

*Oriental Cane with Aluminum Details*

## PANDA IS DEDICATED TO CUSTOMIZING OUR PRODUCTS TO FIT YOUR NEEDS.

We have a variety of tracks, panel profiles, glass options, and hardware to fit every project. We are excited to take this a step further by offering a variety of customizable exterior finishes that will blend seamlessly into any design. Choose anything from faux wood to prismatic colors! These metal composite sheets are made in the US from largely post-consumer recycled materials.

Choose from one of our beautiful designs or work with our team to create your very own. With over one hundred finishes available, the only limit is your imagination!

# HANDLE OPTIONS

**ONE (MINIMAL)**



*Available in Black, Chrome, Brass, and White*

**SEATTLE (MINIMAL)**



*Available in Black and Chrome*

**WONDER (MINIMAL)**



*Available in Black, Chrome, and Champagne*

**PHOENIX (SLIM)**



*Available in Black and Chrome*

**SEATTLE (SLIM)**



*Available in Black and Chrome*

**SEOUL (SLIM)**



*Available in Black and Chrome*





## LADDER PULLS

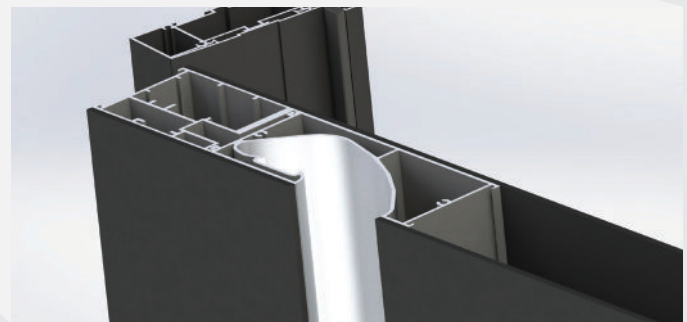
Ladder pulls are standard on door exteriors but can also be added to the interior upon request. Ladder pulls are available as round or square profiles with chrome or black finishes.

- Ladder Pull - Begins from 4ft up to 7ft.



## LED/RECESSED HANDLE (up-charge)

LED lights can be combined with recessed door handles to provide a smooth, seamless design with an extra “wow” factor. This feature can be placed either horizontally or vertically.



# HARDWARE OPTIONS

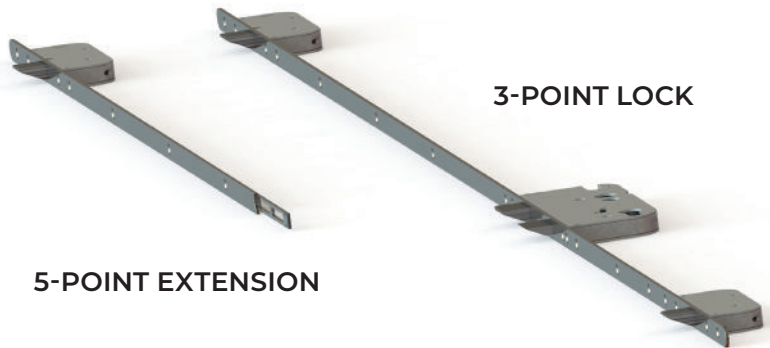


## LOCKING MECHANISMS

- **ROLLER LATCH LOCK**

- **MULTI-POINT LOCK**

- Most robust lock available.
- Elegant brushed chrome finish.
- Added protection against forced entry.
- Typically a 3-point lock, but up to 2 extra points can be added for extra-large doors.
- Can be motorized with automated “unlock” and “lock” features.

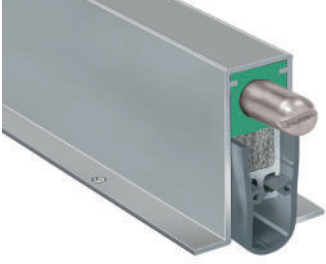


**3-POINT LOCK**

**5-POINT EXTENSION**



## ADDITIONAL FEATURES



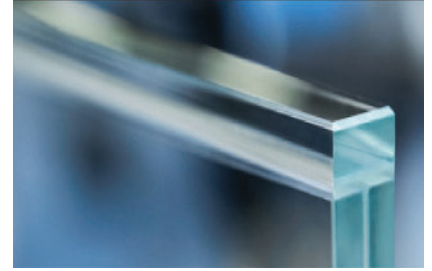
### DROP SEAL FEATURE (standard)

- Offers improved sealing capabilities without causing drag on the door.
- Self actuating when in the closed position.
- Adjustable.
- Can improve a door's weatherability.
- Can fit any size door.



### FLOOR CLOSURE (up-charge)

- Integrated to the door.
- Made of high-performance, corrosion resistant material.
- Floor plate can be applied to any surface.
- Self-closing with adjustable closing speeds and multiple hold positions.
- ADA compliant
- Comes in Stainless steel or black.



### GLASS OPTIONS (up-charge)

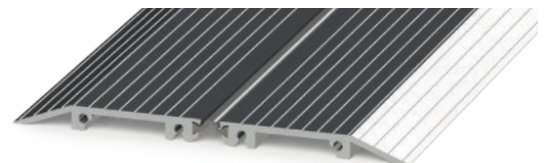
- 1" overall profile with tempered, non-tinted glass.
- 2 Energy efficient options: Cardinal 270 or Cardinal 366 (up-charge),
- Argon option (up-charge).



## DOOR THRESHOLD

We offer an ADA Compliant surface threshold option.

- Thermally broken.
- Available in clear and dark bronze anodized finishes.
- ADA compliant.
- Sill pan compatible for better water performance.
- Anti-slip aluminum extrusion design.

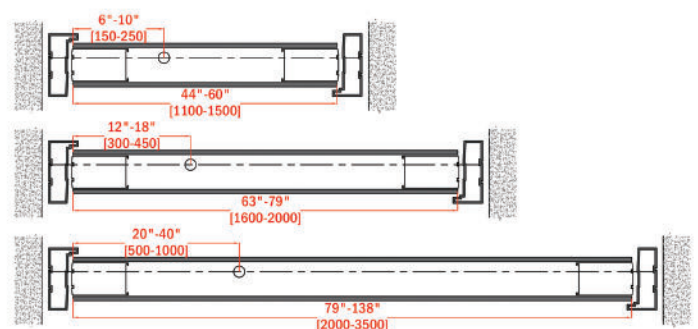
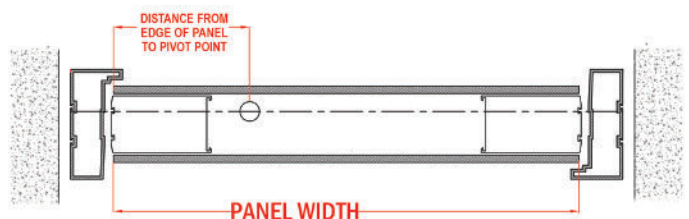




# PIVOT SIZING

Panda Windows and Doors is known for creating the largest doors in the industry. Our Voyage Select Contemporary Pivot Doors are no exception. Thanks to our innovative frames and hardware, we can create pivots up to 9ft wide and 18 ft tall with a maximum weight of 750lbs!

When deciding on the size of your new pivot door, it is critical to work with an engineer that specializes in pivot doors like those on our team at Panda. Remember, the larger the door, the closer the pivot point must be to its center to maintain a balanced and smooth operation. When building pivot doors, engineering experience is key to making your new system operate with ease.

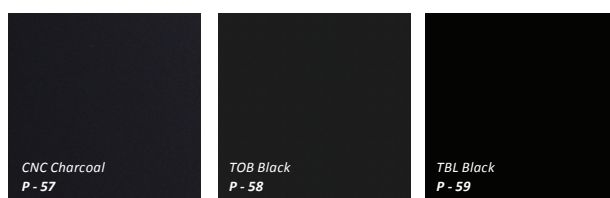






## EACH PIVOT IS PERSONAL.

From metallic to matte, glossy to prismatic, our range of finishes will allow you to create the perfect door for your project. We also have custom color options available.





THE ART OF LUXURY



3415 Bellington Road  
N. Las Vegas, NV 89030  
(702) 643-5700

[www.panda-windows.com](http://www.panda-windows.com)